

**P65-18-XHHW2-E****TBB65 1.3m 2500-2690/1710-2170/1710-2170-65-18i/18i/18i-D with factory attached RET**

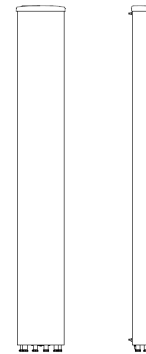
POLARIZATION: XXX-Pol  
 FREQUENCY (MHz): 2500-2690, 2 x 1710-2170  
 HORIZONTAL BEAM WIDTH (°): 65  
 GAIN (dBi dBd): 18.0/15.9, 18.0/15.9, 18.0/15.9  
 TILT: 0-9°/0-10°/0-10°  
 LENGTH: 1.3m (4'3")

**ELECTRICAL SPECIFICATIONS\***

Frequency range (MHz)	2500-2690	2 X 1710-2170		
		1710-1880	1850-1990	1900-2170
Frequency band (MHz)	2500-2690	1710-1880	1850-1990	1900-2170
Gain (dBi/dBd)	18.0/15.9	17.6/15.5	17.8/15.7	18.0/15.9
Polarization	Dual linear ±45°	Dual linear ±45°		
Nominal Impedance (Ω)	50	50		
VSWR	<1.5:1	<1.5:1		
Horizontal beam width, -3 dB (°)	65	65	65	65
Vertical beam width, -3 dB (°)	5.7	7.0	6.6	6.3
Electrical down tilt (°)	0 - 9	0 - 10		
Side lobe suppression, vertical 1st upper (dB)	>18	>18	>18	>18
Isolation between inputs (dB)	>30	>30	>30	>30
Inter band Isolation (dB)	>35	>35		
Tracking, horizontal plane ±60° (dB)	<1	<1	<1	<1
First null fill (dB)	>-24 typical >-17	>-20 typical >-17	>-20 typical >-17	>-20 typical >-17
Vertical beam squint (°)	0.5	0.5	0.5	0.5
Front to back ratio (dB) 180° ±30° copolar	>27	>28	>28	>28
Front to back ratio (dB) 180° ±30° total power	>26	>28	>28	>28
Cross polar discrimination (XPD) 0° (dB)	>15	>17	>17	>17
Cross polar discrimination (XPD) ±60° (dB)	>10	>18	>14	>10
Far field coupling	-	-	-	-
IM3, 2xTx&43dBm (dBc)	<-153	<-153		
IM7, 2xTx&43dBm (dBc)	-	<-160		
Power handling, average per input (W)	250	250		
Power handling, average total (W)	500	1000		

**MECHANICAL SPECIFICATIONS\***

Connector	6x 7/16 DIN Female
Connector position	Bottom
Dimensions, HxWxD, mm(ft)	1320x360x100 (52"x14.2"x4")
Mounting	Pre-mounted heavy duty brackets
Weight, with brackets, kg (lbs)	20.9 (46)
Weight, without brackets, kg (lbs)	15.4 (34)
Wind load, frontal/lateral/rear side 42 m/s Cd=1.6 (N)	520/63/582
Maximum operational wind speed, m/s (mph)	42 (93)
Survival wind speed, m/s (mph)	55 (123)
Lightning protection	DC grounded
Operating Temperature	-40°C to +60°C
Radome Material	FRP
Radome colour	Light Grey
Packing size, HxWxD, mm (ft)	1630x430x250 (64"x17"x10")
Shipping weight, kg (lbs)	28.9(63)
RET	8230.40 (Included)
Brackets	7256.00, 7454.00



\*All specifications subject to change without notice. Please contact your Powerwave representative for complete performance data.

**ANTENNA PATTERNS\***

For detailed patterns visit <http://www.powerwave.com/rpa/>.