

**P65-18-XDH-R****iRET Dual Broadband Cross Polarized  
790-960MHz / 1710-2170MHz, 2.6m**

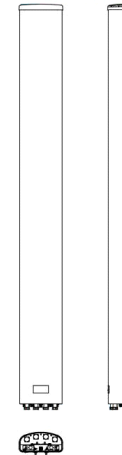
POLARIZATION: XX-Pol  
 FREQUENCY (MHz): 790-960/1710-2170  
 HORIZONTAL BEAM WIDTH (°): 65/65  
 GAIN (dBi dBd): 17.5/15.4, 17.5/15.4  
 TILT: 0-10°/0-10°  
 LENGTH: 2.6m (102")

**ELECTRICAL SPECIFICATIONS\***

	790-960		1710-2170		
	790-896	870-960	1710-1880	1850-1990	1900-2170
Frequency range (MHz)					
Frequency band (MHz)	790-896	870-960	1710-1880	1850-1990	1900-2170
Gain (dBi/dBd)	17.1/15.0	17.5/15.4	17.0/14.9	17.2/15.1	17.5/15.4
Polarization	Dual Linear ±45°		Dual Linear ±45°		
Nominal Impedance (Ω)	50		50		
VSWR	1.5:1		1.5:1		
Horizontal beam width, -3 dB (°)	73	67	64	63	60
Vertical beam width, -3 dB (°)	7.5	7.2	6.7	6.6	6.2
Electrical down tilt (°)	0 - 10		0 - 10		
Side lobe suppression, vertical 1st upper (dB)	>17,17,20,18@ 2,4,6,8	>17,17,20,18@ 2,4,6,8	>16,16,15,15@ 2,4,6,8	>16,16,15,15@ 2,4,6,8	>16,16,15,15@ 2,4,6,8
Isolation between inputs (dB)	>30		>30		
Inter band Isolation (dB)	>35		>35		
Tracking, horizontal plane ±60° (dB)	<1.5	<1.5	<4.0	<4.0	<4.0
First null fill (dB)	<-25	<-25	<-25	<-25	<-25
Vertical beam squint (°)	<0.5	<0.5	<0.5	<0.5	<0.5
Front to back ratio (dB) 180° ±30° copolar	>27	>27	>28	>28	>30
Front to back ratio (dB) 180° ±30° total power	>25	>25	>25	>25	>27
Cross polar discrimination (XPD) 0° (dB)	>13	>13	>16	>16	>16
Cross polar discrimination (XPD) ±60° (dB)	>7	>7	>6	>6	>6
Far field coupling	<0.3	<0.4	<0.5	<0.6	<0.6
IM3, 2xTx&43dBm (dBc)	<-153		<-153		
IM7, 2xTx&43dBm (dBc)	-		<-160		
Power handling, average per input (W)	300		250		
Power handling, average total (W)	600		500		

**MECHANICAL SPECIFICATIONS\***

Connector	4x 7/16 DIN Female long neck
Connector position	Bottom
Dimensions, HxWxD, mm(ft)	2630x 280 x125mm (104 x 11 x 5")
Mounting	Heavy Duty Brackets
Weight, with brackets, kg (lbs)	25.1 (55)
Weight, without brackets, kg (lbs)	19.6 (43)
Wind load, frontal/lateral/rear side 42 m/s Cd=1.6 (N)	883 / 136 / 1062
Maximum operational wind speed, m/s (mph)	42 (93)
Survival wind speed, m/s (mph)	55 (123)
Lightning protection	DC Ground
Operating Temperature	-40°C to +60°C
Radome Material	GRP
Radome colour	Light Grey
Packing size, HxWxD, mm (ft)	2830 x 355 x 255mm (112" x 14" x 10")
Shipping weight, kg (lbs)	32.5 (71.6)
RET	2x8510.40 factory attached (AISGv2.0)
Brackets	7256.00,7454.00A



\*All specifications subject to change without notice. Please contact your Powerwave representative for complete performance data.

**ANTENNA PATTERNS\***

For detailed patterns visit <http://www.powerwave.com/rpa/>.