

P65-15-XDBB-R**Triple Broadband X-Pol 790-960MHz &
2x1710-2690MHz - iRET**

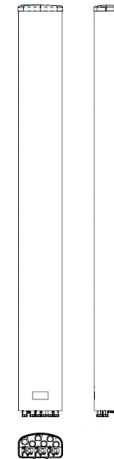
POLARIZATION: XXX-Pol
 FREQUENCY (MHz): 790-960, 2x1710-2690
 HORIZONTAL BEAM WIDTH (°): 65
 GAIN (dBi dBd): 14.7/12.6, 14.6/12.5, 14.6/12.5
 TILT: 0-20°/0-12°/0-12°
 LENGTH: 1.4m(4'7")

PRELIMINARY**ELECTRICAL SPECIFICATIONS***

	790-960		2x1710-2690		
	790-894	880-960	1710-1880	1900-2170	2500-2690
Frequency range (MHz)					
Frequency band (MHz)	790-894	880-960	1710-1880	1900-2170	2500-2690
Gain (dBi/dBd)	14.1/12.0	14.7/12.6	14.4/12.3	14.6/12.5	14.8/12.7
Polarization	Dual linear ±45°		Dual linear ±45°		
Nominal Impedance (Ω)	50		50		
VSWR	<1.5:1		<1.5:1		
Horizontal beam width, -3 dB (°)	71	67	65	64	62
Vertical beam width, -3 dB (°)	14.9	13.9	13.3	12.6	12.0
Electrical down tilt (°)	0 - 20		0 - 12		
Side lobe suppression, vertical 1st upper (dB)	>18,17,16,16@ 2,4,8,12	>17,16,15,14@ 2,4,8,12	>17,16,15,14@ 0,4,8,12	>17,16,15,14@ 0,4,8,12	>17,16,15,14@ 0,4,8,12
Isolation between inputs (dB)	>30	>30	>30	>30	>30
Inter band Isolation (dB)	>38		>38		
Tracking, horizontal plane ±60° (dB)	<1	<2	<1.5	<1.2	<4
First null fill (dB)	25	25	25	25	25
Vertical beam squint (°)	0.7	0.7	0.7	1	1
Front to back ratio (dB) 180° ±30° copolar	>27	>28	>28	>28	>28
Front to back ratio (dB) 180° ±30° total power	>24	>24	>24	>24	>24
Cross polar discrimination (XPD) 0° (dB)	>13	>13	>13	>13	>13
Cross polar discrimination (XPD) ±60° (dB)	>10	>10	>10	>10	>10
Far field coupling					
IM3, 2xTx&43dBm (dBc)	<-153		<-153		
IM7, 2xTx&43dBm (dBc)			<-160		
Power handling, average per input (W)	300		250		
Power handling, average total (W)	600		500		

MECHANICAL SPECIFICATIONS*

Connector	6x 7/16 DIN Female
Connector position	Bottom
Dimensions, HxWxD, mm(ft)	1408x330x155mm (4'7"x13"x6")
Mounting	Pre-mounted heavy duty brackets
Weight, with brackets, kg (lbs)	17.5 (38.6)
Weight, without brackets, kg (lbs)	12 (26.4)
Wind load, frontal/lateral/rear side 42 m/s Cd=1.6 (N)	610 / 107 / 661
Maximum operational wind speed, m/s (mph)	42 (93)
Survival wind speed, m/s (mph)	55 (123)
Lightning protection	DC grounded
Operating Temperature	-40°C to +60°C
Radome Material	PVC
Radome colour	Light Grey
Packing size, HxWxD, mm (ft)	1550x400x200 (5'1"x15.7"x7")
Shipping weight, kg (lbs)	21.5 (47.4)
RET	3x8510.40 factory attached and configured to AISGv2.0
Brackets	7256.00, 7454.00A



*All specifications subject to change without notice. Please contact your Powerwave representative for complete performance data.

ANTENNA PATTERNS*

For detailed patterns visit <http://www.powerwave.com/rpa/>.