

7465.0ST.0000.00

Dual Low Broadband Cross Polarized

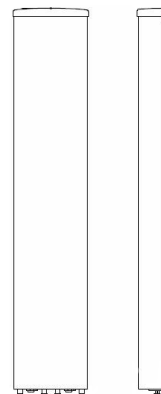
POLARIZATION: XX-Pol
 FREQUENCY (MHz): 806-960
 HORIZONTAL BEAM WIDTH (°): 65°+
 GAIN (dBi/dBd): 17.1/15.0, 17.6/15.5
 TILT: 0-5.5°
 LENGTH: 2.6m (8'6")

ELECTRICAL SPECIFICATIONS*

	806-960	
Frequency range (MHz)	806-960	
Frequency band (MHz)	806-896	870-960
Gain (dBi/dBd)	17.1/15.0	17.6/15.5
Polarization	Dual linear ±45°	
Nominal Impedance (Ω)	50	
VSWR	<1.5:1	
Horizontal beam width, -3 dB (°)	85	75
Horizontal beam width, -10 dB (°)	140	130
Vertical beam width, -3 dB (°)	7.5	7.0
Electrical down tilt (°)	0 - 5.5	
Side lobe suppression, vertical 1st upper (dB)	>16	>15.5
Isolation between inputs (dB)	>22 (co-polar) >28dB (cross-polar)	>25 (co-polar) >30dB (cross-polar)
Tracking, horizontal plane ±60° (dB)	<1.6	<1.6
First null fill (dB)	<-25	<-25
Vertical beam squint (°)	0.5	0.3
Front to back ratio (dB) 180°±30° copolar	>25	>25
Front to back ratio (dB) 180°±30° total power	>20	>20
Cross polar discrimination (XPD) 0° (dB)	>15	>15
Cross polar discrimination (XPD) ±60° (dB)	>10	>10
Far field coupling		
IM3, 2xTx@43dBm (dBc)	-150	
Power handling, average per input (W)	250	
Power handling, average total (W)	400	

MECHANICAL SPECIFICATIONS*

Connector	4 x 7/16 DIN Female
Connector position	Bottom
Dimensions, HxWxD, mm (ft)	2658x400x150 (8'3"x16"x6")
Mounting	Pre-mounted heavy duty bracket
Weight, with brackets, kg (lbs)	28.1 (61.9)
Weight, without brackets, kg (lbs)	22.5 (49.6)
Wind load, frontal/lateral/rear side 42 m/s Cd=1.6 (N)	1418/222/1485
Maximum operational wind speed, m/s (mph)	42 (93)
Survival wind speed, m/s (mph)	55 (123)
Lightning protection	DC grounded
Operating Temperature	-40°C to +60°C
Radome material	ASA
Radome colour	Light Grey
Package size, HxWxD, mm (ft)	2910x470x283 (115"x18.5"x11")
Shipping weight, kg (lbs)	36.1 (79.6)
RET	No RET pre-mounted
Brackets	7256.00 premounted.



*All specifications subject to change without notice. Please contact your Powerwave representative for complete performance data.

ANTENNA PATTERNS*

For detailed patterns visit <http://www.powerwave.com/rpa/>.