

7255.13

## X-Urban Cross Polarized

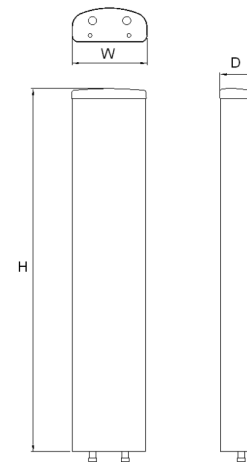
POLARIZATION: X-Pol  
 FREQUENCY (MHz): 880-960  
 HORIZONTAL BEAM WIDTH (°): 65  
 GAIN (dBi dBd): 16.5/14.4  
 TILT: FET  
 LENGTH: 1.9m (6'2")

## ELECTRICAL SPECIFICATIONS\*

Frequency range (MHz)	880-960
Frequency band (MHz)	880-960
Gain (dBi/dBd)	16.5/14.4
Polarization	Linear slanted $\pm 45^\circ$
Nominal Impedance ( $\Omega$ )	50
VSWR	<1.4:1
Horizontal beam width, -3 dB (°)	65
Vertical beam width, -3 dB (°)	9
Electrical down tilt (°)	6
Side lobe suppression, vertical 1st upper (dB)	>15
First null fill (dB)	-
Vertical beam squint (°)	<0.3
Front to back ratio (dB) $180^\circ \pm 30^\circ$ coplanar	>24
Front to back ratio (dB) $180^\circ \pm 30^\circ$ total power	>20
Cross polar discrimination (XPD) $0^\circ$ (dB)	>20
Cross polar discrimination (XPD) $\pm 60^\circ$ (dB)	>10
Far field coupling	-
IM3, 2xTx&43dBm (dBc)	<-150
Power handling, average per input (W)	250
Power handling, average total (W)	500

## MECHANICAL SPECIFICATIONS\*

Connector	2 x 7/16 DIN female
Connector position	Bottom
Dimensions, HxWxD, mm(ft)	1940x256x50 (6'4"x10"x2")
Mounting	Pre-mounted standard bracket
Weight, with brackets, kg (lbs)	14.2 (31.3)
Weight, without brackets, kg (lbs)	10.5 (23.1)
Wind load, frontal/lateral/rear side 42 m/s Cd=1.6 (N)	794
Maximum operational wind speed, m/s (mph)	42
Survival wind speed, m/s (mph)	55 (123)
Lightning protection	DC grounded
Operating Temperature	
Radome Material	PVC
Radome colour	Light Gray
Packing size, HxWxD, mm (ft)	2050x308x121 (6'9"x1'x5')
Shipping weight, kg (lbs)	12 (26.5)
Brackets	7456.00A, 7454.00, 7455.00, 7458.00



\*All specifications subject to change without notice. Please contact your Powerwave representative for complete performance data.

## ANTENNA PATTERNS\*

For detailed patterns visit <http://www.powerwave.com/rpa/>.